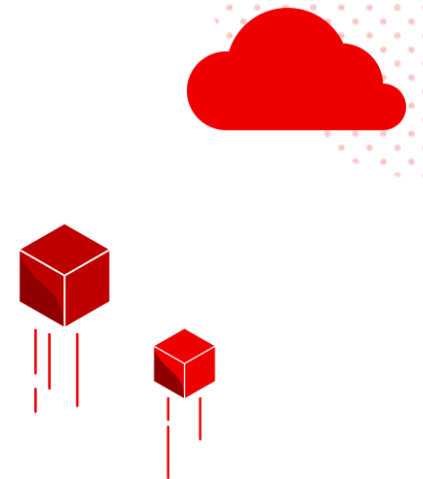




# Bienvenida

Pilar Bravo

Global OpenShift SSA Role Leader, Red Hat





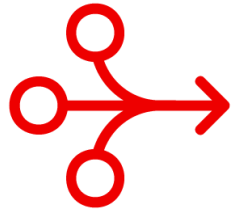
Red Hat 30<sup>th</sup> Anniversary

The logo features the text "Red Hat 30<sup>th</sup> Anniversary" in a bold, blue, sans-serif font with a white outline. The text is set against a black background. Above the "30" is a large blue circle containing a red hat icon. To the left of the "30" is a smaller blue circle containing a red hat icon. The entire logo is centered horizontally.

# How we got here?



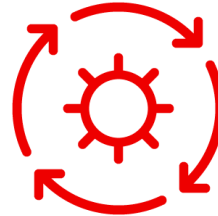
**Any workload, any footprint, any location** requires a hybrid approach  
*Red Hat helps customers **build, run, and manage applications everywhere***



**Simplify**



**Build**



**Manage &  
Automate**

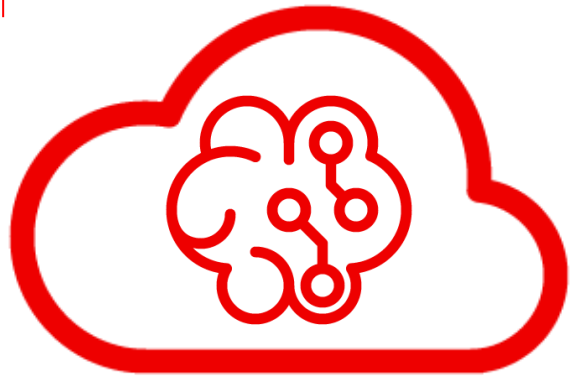


**Secure**



**Scale**

Red Hat's new innovations address **key enterprise**  
**needs in the multi-cloud and AI era**



# AI for the Open Hybrid Cloud

## *Enterprise-grade hybrid AI and MLOps foundation*

Train, serve, monitor and manage the lifecycle of AI/ML models and applications, from experiments to production



*Now available as fully managed cloud service or traditional software product on-prem or in the cloud*

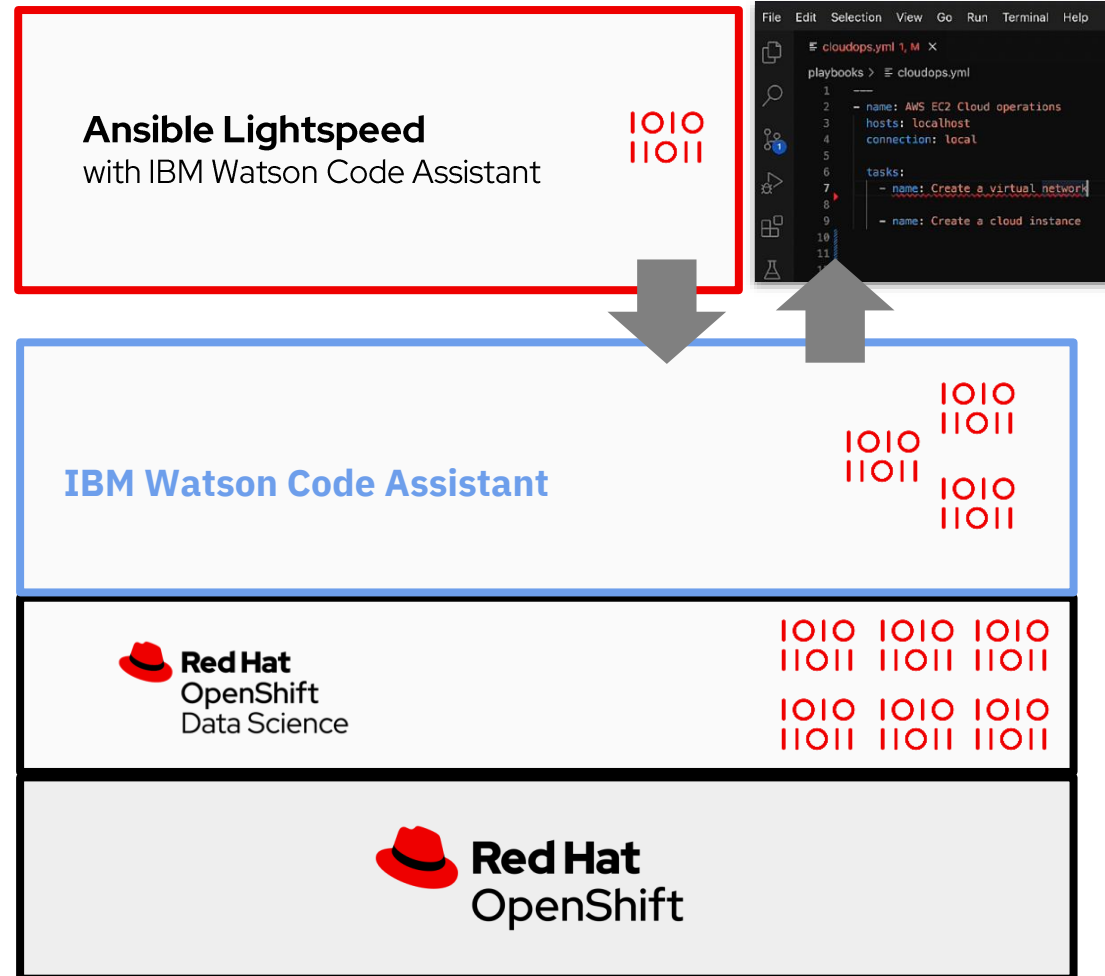
### Announcing Red Hat OpenShift AI

Red Hat OpenShift AI builds and expands upon the proven capabilities of Red Hat OpenShift and Red Hat OpenShift Data Science to:

- Provide a consistent foundation for IT operations leaders
- Bring a specialized partner ecosystem to data scientists and developers to capture innovation in AI, in a manner that can scale
- Scale to handle workload demands of foundation models (volume of data, duration of training run, size of model, acceleration required, and scalability).
- Deliver consistency, ease-of-use, and cloud-to-edge deployment options.
- Power end-to-end lifecycle for watsonx.ai and Ansible Lightspeed.

# Introducing Ansible Lightspeed

- **Domain-specific AI**, singularly focused on automation
- **Transparency and choice** inherent to user experience
- Makes specific automation knowledge and skills more **broadly accessible**



# Introducing Event-Driven Ansible

*Achieve new milestones in IT service efficiency*

**Automate** decision making

**Leverage** numerous sources of events

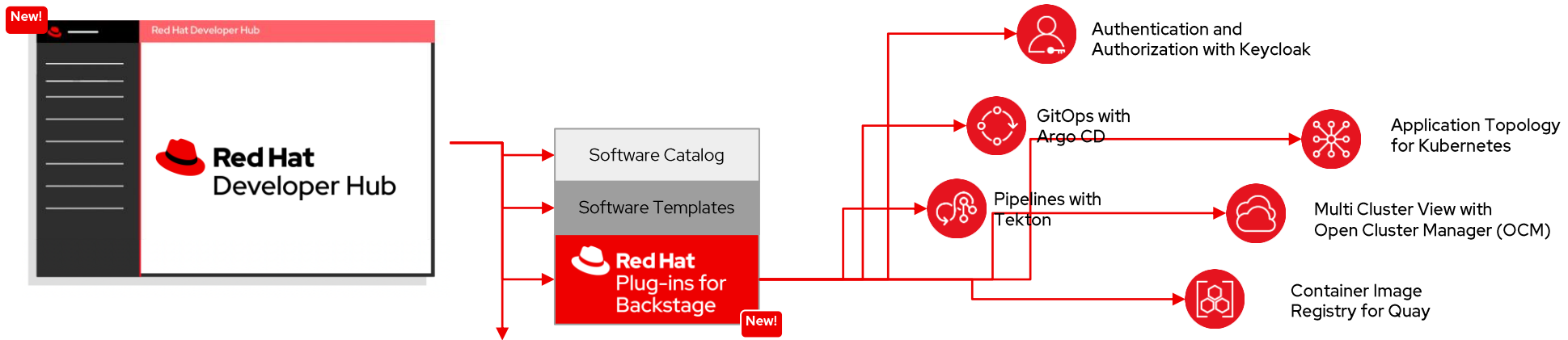


**Implement** event-driven automation within and across multiple IT use cases

**Achieve** new milestones in efficiency, service delivery excellence and cost savings

# Announcing Red Hat Developer Hub & Red Hat Plug-ins for Backstage

*Introducing a renewed developer experience*



Integrates with industry standards and technologies through a broad ecosystem.

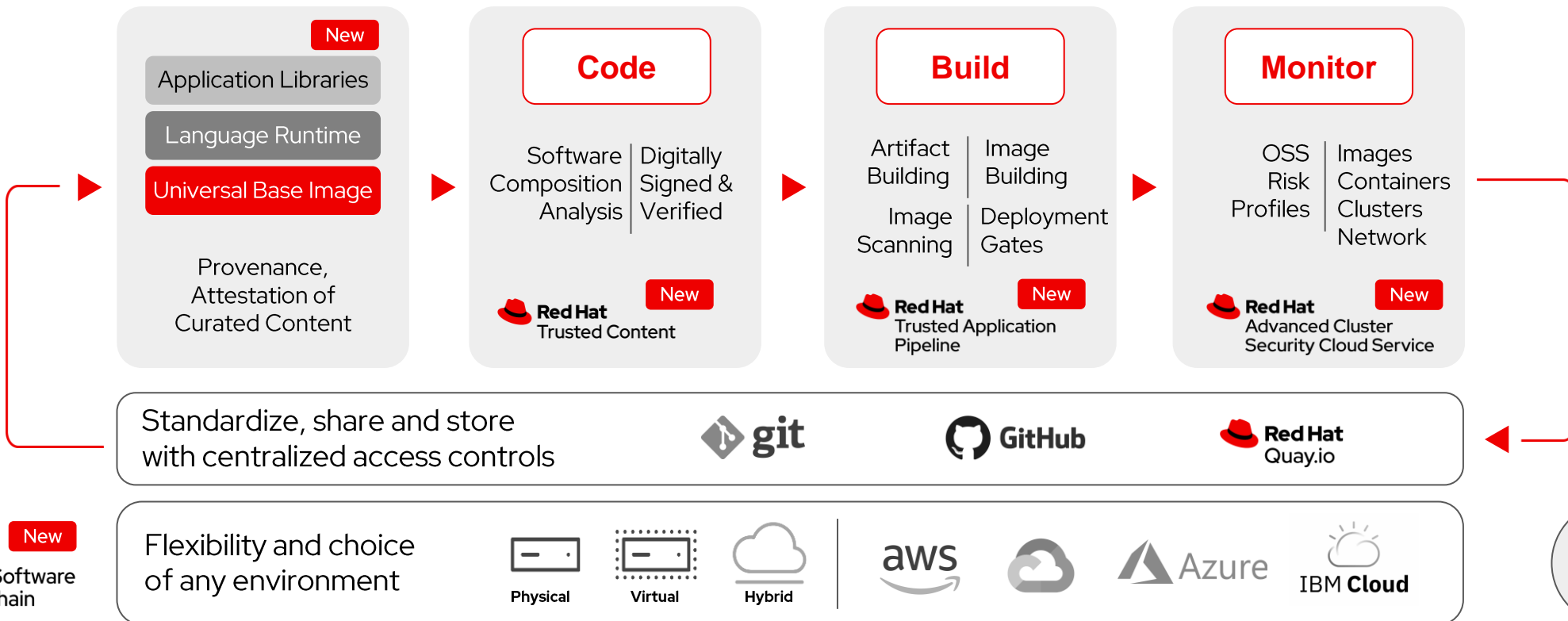
Based on Backstage, an open source platform for building developer portals.

Consistent developer experience across environments.



# Announcing Red Hat Trusted Software Supply Chain

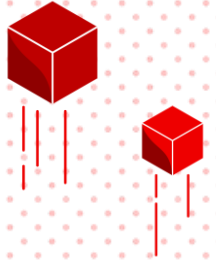
*Delivered as a cloud service with integrated security guardrails at every phase of the software development life cycle*



**Red Hat** New  
Trusted Software Supply Chain



# Mesa Redonda: Viaje a la nube, Grupo Piñero



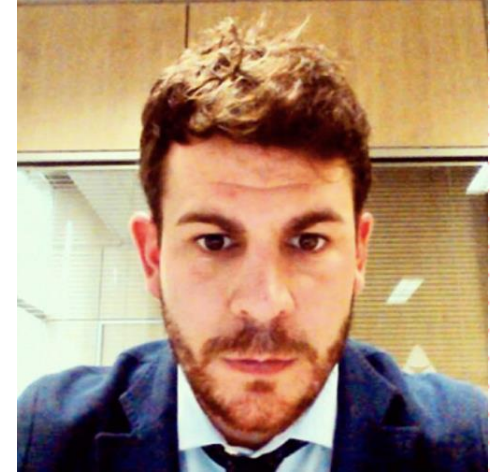
**Enrique Sureda**

Gerente de Infraestructuras  
y Comunicaciones,  
Grupo Piñero



**Pablo Carrillo**

Territory Sales Director,  
Logicalis



**Santiago Lara**

Account Executive,  
Red Hat