



NA Training Partner Conference

Virtual experience | 7-9 Sept, 2021

 **Open** collaboration,
learning **anywhere** 



Red Hat Instructor



Partner Tips

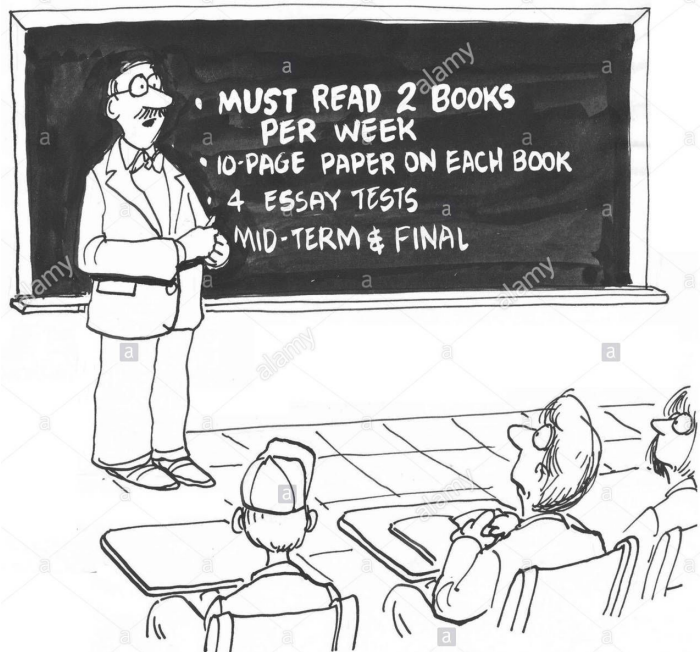
Name,

Travis Michette, North America (NA)

Agenda:

- ▶ Course Updates and Requirements
- ▶ Room Design and Layout
- ▶ Nice to Have Items

Red Hat Course Updates & Requirements

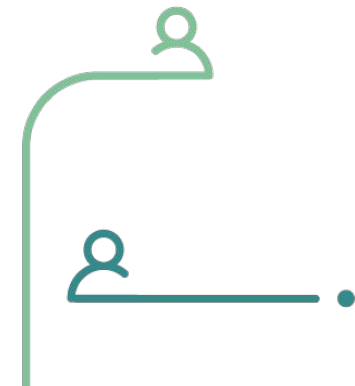


“Feel free to complain about the course requirements.”

New Courses - New Hardware Requirements



- RHEL8.2 changed many of the introductory course requirements and the introduction to containers also require more CPU and memory (RAM).
- WebUI changes have also required a minimum of 1920x1080 resolution



Red Hat Administration Courses – Basic Requirements (RH124/134/199)

LEVEL 3 System Configuration

Component	Minimum Requirement
Processor (CPU)	Intel Core i5 CPU with 4 cores and VT support <i>** Note: AMD CPUs are also supported for most courses, but there are incompatibilities for the Virtualization courses.</i>
Memory (RAM)	16GB
Storage (HDD//SSD)	250 GB HDD on a single disk (SSD recommended)

<https://www.redhat.com/en/resources/red-hat-training-and-certification-classroom-requirements>

Room Design & Layout



Traditional Course Deliveries with Partner Equipment

Computer/AV/Networking Requirements

Instructor Setup

- ▶ Whiteboard
- ▶ Projector or large display for presentations supporting 1920x1080 resolution
- ▶ Ability to have dual-networks
 - One NIC connected to classroom “private” network
 - One NIC connected to public network for Internet access
- ▶ Instructor Workstation
 - Monitor that shows what is on projector/screen
 - Functional keyboard/mouse

Student/Participant Setup

- ▶ Classroom on private “disconnected” network
- ▶ Monitor supporting 1080P (1920x1080) resolution
- ▶ Functional keyboard & mouse
- ▶ Adequate room for keyboard, mouse, and course guide
- ▶ All student stations within good visual view of one or more instructor displays (TVs or projectors)

Traditional Course Deliveries Using Red Hat MCR Kits

Computer/AV/Networking Requirements

Instructor Setup

- ▶ Whiteboard
- ▶ Projector or large display for presentations supporting 1920x1080 resolution
- ▶ Ability to have dual-networks
 - One NIC connected to classroom “private” network
 - One NIC connected to public network for Internet access
- ▶ Instructor Workstation
 - Monitor that shows what is on projector/screen
 - Functional keyboard/mouse

Student/Participant Setup

- ▶ Classroom on private “disconnected” network
- ▶ Monitor supporting 1080P (1920x1080) resolution
- ▶ Functional keyboard & mouse
- ▶ Adequate room for keyboard, mouse, and course guide
- ▶ All student stations within good visual view of one or more instructor displays (TVs or projectors)

DEVOPS/DO500 Course Requirements

Computer/AV/Networking Requirements

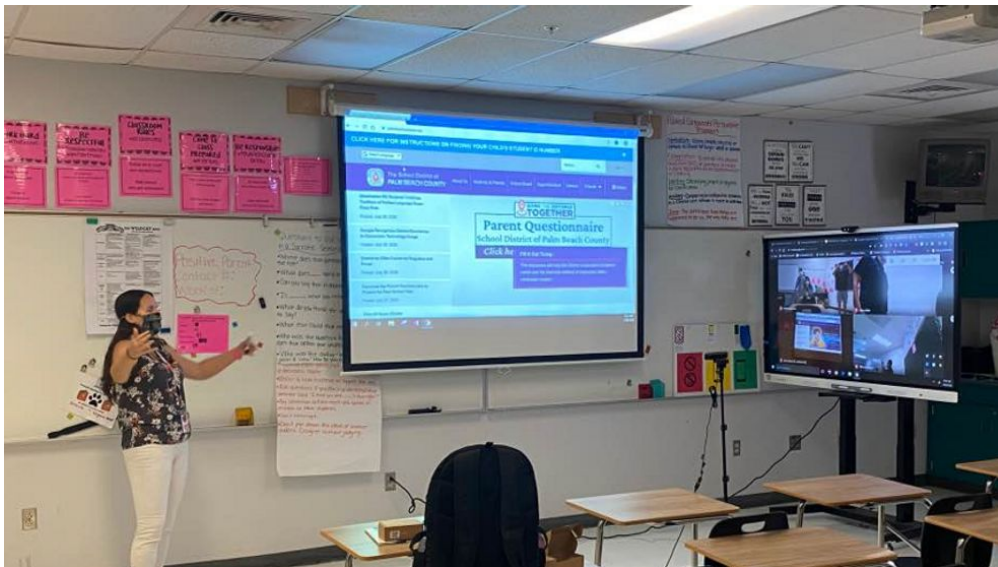
Instructor Setup

- ▶ Whiteboard (multiple)
- ▶ Lots of wall-space
 - Will be hanging items with tape, post-it notes, and chart papers
- ▶ Projector or display for presentations/videos
- ▶ Speakers or audio system so that videos can be heard by all participants
- ▶ Instructor Workstation
 - Monitor that shows what is on projector/screen
 - Functional keyboard/mouse

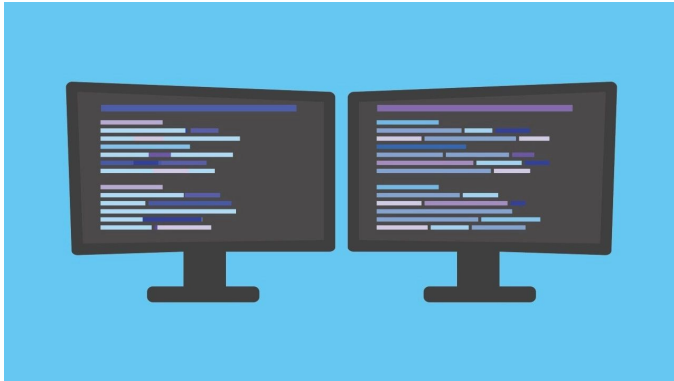
Student/Participant Setup

- ▶ Computer Workstation (if not a BYOD delivery)
 - Monitor supporting 1080P (1920x1080) resolution
 - Functional keyboard & mouse
 - Adequate room for keyboard, mouse, and course guide
- ▶ All student stations within good visual view of one or more instructor displays (TVs or projectors)
- ▶ Ability to re-design the workspace to break students up into teams and groups
- ▶ Large room for moving around and possibly the need for break-out or overflow spaces

Nice to Have Items



Instructor Extras



Dual-Monitors

Extra monitor available for "private" display.



Large Workspace

Enough room on the workspace for instructor to have a laptop, table, book available



Audio System

Speaker/microphone setup (especially for larger rooms)

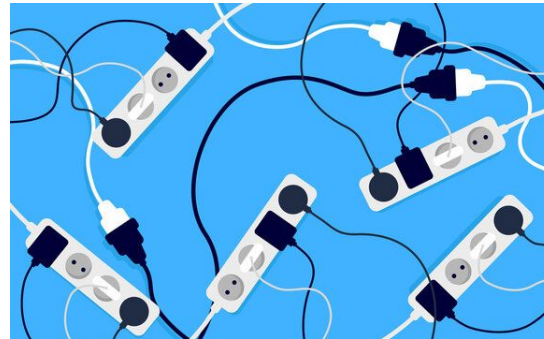
Traditional Course Deliveries Using Red Hat MCR Kits

Wiring and Power Considerations



Networking Cables

Ideally all station areas will have network cables or a network jack that come back to a central switching location at the front of the room.



Power Available at Student Workstation

Desks or tables located near power outlets to avoid massive amounts of extension cords and surge protectors



Individual Desks/Tables

Individual desks or tables with enough room for students to have course manual and other items available in their workspace..

Thank you!

Red Hat is the world's leading provider of enterprise open source software solutions. Award-winning support, training, and consulting services make Red Hat a trusted adviser to the Fortune 500.



[linkedin.com/company/red-hat](https://www.linkedin.com/company/red-hat)



[youtube.com/user/RedHatVideos](https://www.youtube.com/user/RedHatVideos)



[facebook.com/redhatinc](https://www.facebook.com/redhatinc)



twitter.com/RedHat